



AUTO CALIBRATION PRESS

Weight

Press Frame Assembly 2500 lbs
Hydraulic Power Unit 280 lbs

Physical Specifications

Operating Capacity 100,000 lbs
Display Division 100,000 x 1 lbs (Decimal optional)
Calibration Accuracy (Max Error) +/- .02% Full Scale OR Better
Load Cell Recommended Calibration Interval Annually
Load Cell Capacity 100,000 lbs
Cylinder Stroke 4 inches
PWR Requirements 220 VAC Single Phase
Pump 5 HP, Single Phase

Indicator

Indicator Resolution 24 bit
Indicator Accuracy 15 ppm

Positioning

Ram Travel Speed for Positioning 4.8 inches/min
Positioning Tolerance < 1 mm

Accuracy +/- 10 um

Environmental Specifications

Temperature Range: -30° to + 135° F
Storage: -30° to + 135° F
Recommended Operating: 70° +/- 5° F

Humidity Range:

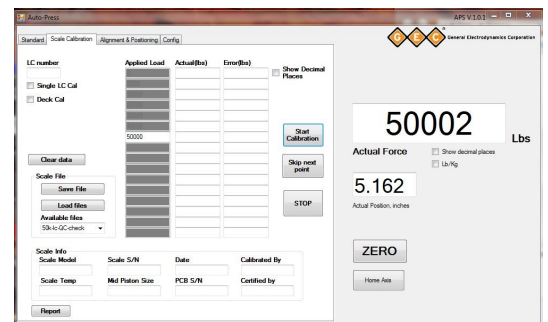
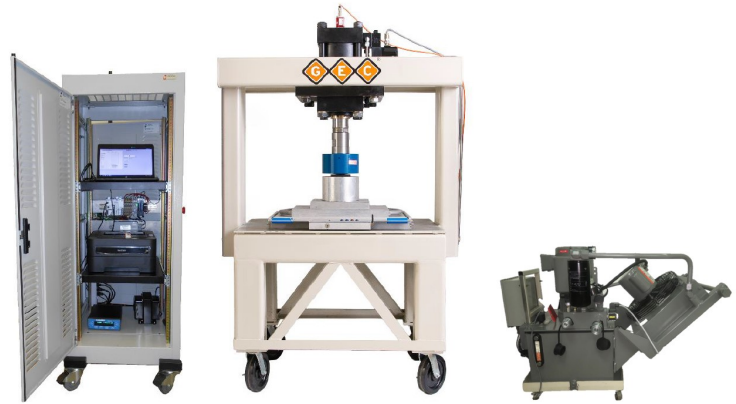
Storage: 90% Maximum
Recommended Operating: 50% to 60%

Software Features

- User Friendly guided calibration/verification
- Dual closed loop force control to achieve 0.02% or better uncertainty
- Connect multiple load cell standards with different capacities
- User can select, save and retrieve multiple test load points

Overall Dimensions

Overall - Press Frame 50.5" Wide x 32" Deep x 70" Height
Working Surface Dimensions 42" x 32"
Hydraulic Power Unit 38" Wide x 24" Deep x 32" Tall



8000 CALENDAR ROAD
ARLINGTON, TEXAS
Phone: 817-572-0366
Fax: 817-572-0373
Email: info@gecscales.com
Web: www.gecscales.com
Movie: <http://impactmovie.com/gec>

PROPRIETARY NOTICE

This document contains information which concerns or relates to trade secrets, processes, operations, pricing, style of work apparatus, or to identity, confidential statistical data amount source or any income, profits, losses or expenditures of General Electrodynamics Corporation. Such information is being submitted in confidence with the understanding that it will not be disclosed to third parties in whole or part without the express written consent of an officer of General Electrodynamics Corp. (Reference Trade Sec. Rets Act, 18U.S.C. 1905)