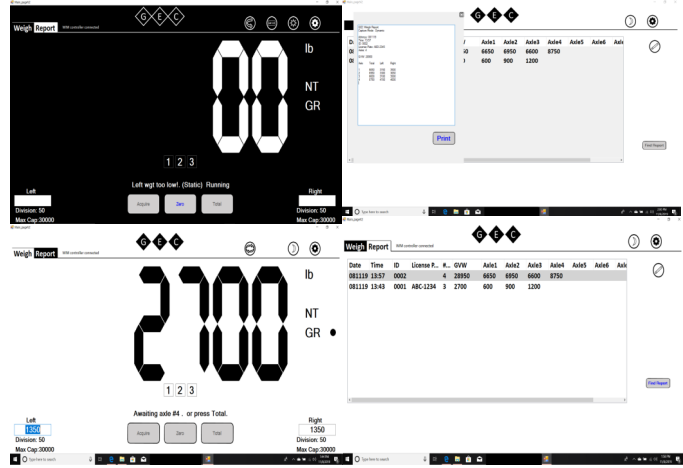
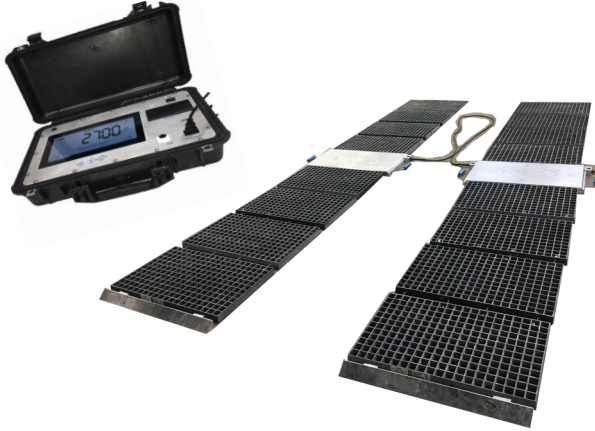




WEIGH-IN-MOTION (WIM) SPECIFICATIONS DATA SHEET

“All GEC Products are Made in the USA”



Weigh in Motion System Specifications

Description	Specifications	Units
Operating Temperature	-10°C to 50°C (14°F to 122°F)	C or F
Storage Temperature	-30°C to 80°C (-22°F to 176°F)	C or F
Inverter Power Requirements	12 VDC In; 115 VAC 60 Hz Out	
ICI Charging Requirements	100-240 VAC 50/60 Hz Input	
Scale Capacity (per side)	0 to 20,000 (9072)	Lbs /(Kgs)
Overload Capacity	150	%
Axle Capacity	0 to 40,000 (18143)	Lbs /(Kgs)
Static Accuracy	+/- 1%	%
Dynamic Accuracy	+/- 2%	%
Operating Speed	0-8 (12.87)	Mph (Kmh)
Scale Dimensions	32" W x 18" L x 1.8" H (812.8 W x 457.2 L x 45.72)	Inches (mm)
Weight per pad	60 (27.21)	Lbs (Kgs)
Leveler Dimension	30" W x 83" L x 1.8" H	Inches
Leveler Weight	72	Lbs

Features

- Static / Dynamic mode of Operation with WIM
- Reporting includes axle weights, gross weight, Vehicle id, Driver information and more
- Easy setup and take down
- Accurate vehicle profiling, Center of balance, speed and vehicle dimension (L x W x H)
- Automated Vehicle Classification
- Portable WIM indicator with thermal printer for ticketing



PROPRIETARY NOTICE

This document contains information which concerns or relates to trade secrets, processes, operations, pricing, style of work apparatus, or to identity, confidential statistical data amount source or any income, profits, losses or expenditures of General Electrodynamics Corporation. Such information is being submitted in confidence with the understanding that it will not be disclosed to third parties in whole or part without the express written consent of an officer of General Electrodynamics Corp.
 (Reference Trade Sec. Rets Act, 18U.S.C. 1905)

W
I
M